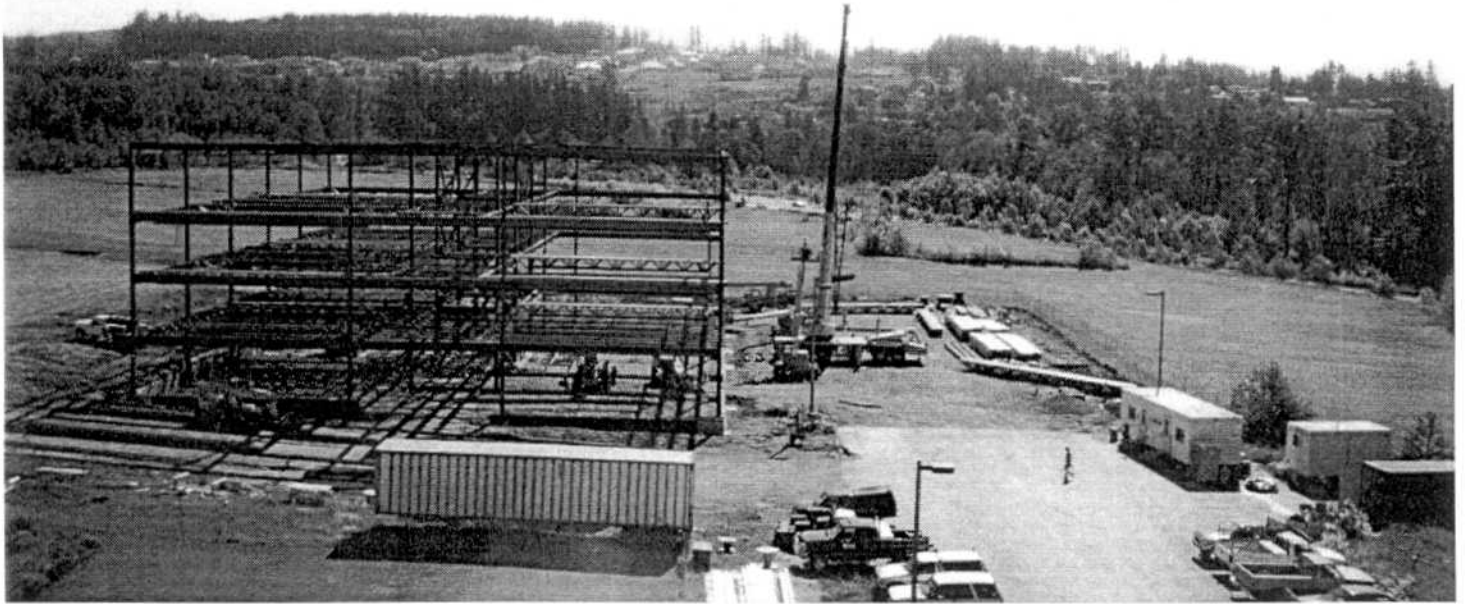


# Talbot's Bellingham project keeps growing



BY JOE NABBefeld

Seattle businessman Jim Talbot is accelerating the pace of construction at his Barkley District planned development in Bellingham.

In his latest move, Talbot Investment Co. has signed a tenant for about 45,000 square feet to launch construction of a new office building in the project east of Interstate 5. Olympic Health Management leased three of the four floors in the planned 72,000-square-foot Barkley Building. Construction promptly began and is scheduled to finish next spring.

Barkley District is a 250-acre planned "urban village," as Talbot Investment describes it. It's located a mile east of I-5 on the Mount Baker Highway,

where Woburn Street and Barkley Boulevard meet.

Hexcel Corp. set up the project's earliest piece in 1989, a 150,000-square-foot plant for producing composite products for

A shopping center anchored by a 63,000-square-foot Haggen Food and Pharmacy, called Barkley Village, came in 1995. It occupies 13 acres.

A stretch of 59 single-

construction to begin on each within six months. They are a 20,000-square-foot medical office building and a 32,000-square-foot structure called the Professional Building.

---

*Barkley District is a 250-acre planned "urban village", as Talbot Investment describes it.*

---

airlines. Hexcel is adding 30,000 square feet.

The Haggen grocery chain teamed with Talbot to build the first office building in 1993: the four-story Haggen Talbot Building. The 88,000-square-foot structure houses Haggen Inc.'s headquarters along with various other tenants.

family houses came in 1997, called Barkley Woods.

Now a similar group of 59 houses called Brandywine, and a 57-unit section called Barkley Meadows, are under construction, projected to finish in summer 2000.

Talbot plans two more office buildings, with